

Property 1551365444



**Number of beds:** 2 + 2

**Bedrooms:** 1

Accessibility for people with reduced mobility

**Pets Allowed**

Pets allowed on request.



**Air Conditioning Throughout**

Included in the rental price.



**Air Conditioning In The Bedrooms**

Included in the rental price.



**Hair Dryer In The Bathrooms**



**Dryer**

**Safe**

Safe box in the bedroom.

**Crib**



**Fibre Internet**

**The Villa is Less Than 15 km From a Golf Course**

The apartment is 12 km from Circolo Golf dell'Ugolino.

**The maximum distance from the city centre is 1.5 km**

The apartment is located in the city center, in the area of the Basilica of Santa Croce. The Duomo of Florence is about 1,3 km on foot.



**Dishwasher**



**Washing Machine**

**Mattress sizes and bed dimensions**

1 Double bedroom with queen-size bed.1 Double sofa bed in the living/dining area,

## Bath amenities

Initial supply and weekly refill for longer stays.

## Nearby

Supermarket – CONAD CITY Via dei Tintori, 18 (180 meters on foot).Pharmacy – Farmacia SELVA Via Ghibellina, 87/E (280 meters on foot).Tobacco shop – Tabaccheria Santa Croce Piazza Santa Croce, 1/R (170 meters on foot).Bank Artigiancassa - Via Giuseppe Verdi, 16 (300 meters on foot).Restaurant Boccanegra – Via Ghibellina, 124/R (350 meters on foot).Wine Shop Pinchiorri – Via Ghibellina, 87 (270 meters on foot).Baldovino Bistrot – Via San Giuseppe, 22/R (220 meters on foot).Dondino – Piazza Santa Croce, 6/R (190 meters on foot).Restaurant Finisterrae, Piazza di Santa Croce, 12 (120 meters on foot).



## Parking Space

The whole area of the historic center of Florence is defined as a Limited Traffic Zone (ZTL).The apartment is located within the ZTL, so at each entrance it is necessary to communicate the license plate of your car and the time of entry to the parking staff.Near the apartment, you will find a garage with which there is an agreement. Daily parking cost starting not included in the rental price.Opening hours from 7:00 am to 1:00 am.



## Heating

Included in the rental price.

## High Chair



## Concierge Service

Concierge service available via email from 7:00 am to 8:00 pm. Included in the rental price.



## Housekeeping

Bed linen and bath towels are changed every three days. The Room & Bathroom Cleaning Service is from 10:00 am to 14:00 pm. Please notify the apartment manager the day before to request this extra service. Cost for rearrangement of rooms, bathroom and change of linen is not included in the rental price.

## Smart TV



## Satellite TV



## City Views



## Wi-Fi

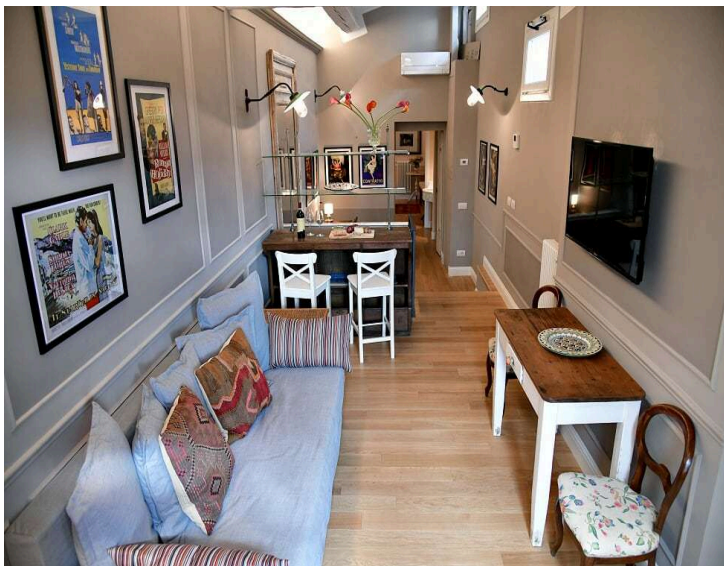
**\* Please note:** the included amenities may vary according to final agreement, make sure to check your contract for complete list.

## NEARBIES

Florence Palace Apartments are 11 km from Florence Amerigo Vespucci International Airport, 84 km from Pisa Galileo Galilei International Airport, and 304 km from Rome Leonardo da Vinci International Airport. Impruneta is 14 km from the apartments, San Gimignano is 56 km, Siena is 75 km, Volterra is 78 km, Lucca is 88 km, Pisa is 89 km, Livorno is 95 km, Montepulciano is 109 km, and Montalcino is 113 km.

## FEATURES

- 1 Double Bedroom + 1 Double Sofa Bed
- 1 Bathroom with Carrara Marble Shower
- Fully-Equipped Kitchen
- Living and Dining Area
- Espresso Machine and Kettle
- Flat-Screen Smart TV
- Wi-Fi
- Air Conditioning
- Entrance Stairs
- Lift (in the Building)



# DESCRIPTION

## TAURUS APARTMENT - FLORENCE

### 1 Bedroom

#### Location and Surrounding Area

Located on the third floor of an elegant building in the heart of Florence and just steps away from the city's finest dining, shopping, and entertainment options, this modern apartment is the ideal retreat for a stylish stay in one of Italy's most beautiful cities. Florence, which was the cultural and artistic capital of Europe from the 13th to the 15th centuries, offers a wealth of architectural and artistic treasures, as well as countless other delights in this charming Tuscan city.

Florence's unparalleled reputation as an art city is evident from the iconic Duomo, easily identifiable by its high terracotta dome that dominates the city skyline. The area surrounding the Duomo is pedestrian-friendly and often crowded with tourists. The best way to explore this area, with its flat streets and wide pavements, is on foot. You'll find several cafés and ice-cream parlours in and around the square, perfect for a break from sightseeing.

The Uffizi Gallery, located just off Piazza della Signoria, is a must-visit. Here, a replica of Michelangelo's David overlooks the stunning fountains beside the stately Palazzo Vecchio. The gallery's long loggia connects the piazza to the river Arno and is a short walk from the mediaeval Ponte Vecchio, Florence's oldest bridge, lined with jewellery shops. Despite the crowds, the surrounding streets and squares offer numerous options for exceptional meals, drinks, and ice cream.

As one of Italy's premier art galleries, the Uffizi spans the full range of Florentine art, from Byzantine icons and early mediaeval art to Renaissance masterpieces and Mannerist works. Instead of trying to see every painting, focus on spotting animals in the artwork or concentrate on highlights by renowned Italian artists such as Giotto, Botticelli, Piero della Francesca, Leonardo, and Michelangelo.

The sprawling 16th-century Boboli Gardens, adjacent to the grand Palazzo Pitti in the Oltrarno district, represent a splendid example of Italian Renaissance gardens and serve as the city's green lung. The formal layout of the gardens provides a refreshing escape from the bustling city streets. After exploring the gardens, the narrow lanes of Oltrarno offer a glimpse into local life, with great local restaurants and traditional workshops, providing a contrast to the more tourist-heavy areas across the river.

Florence Palace Apartments are 11 km from Florence Amerigo Vespucci International Airport, 84 km from Pisa Galileo Galilei International Airport, and 304 km from Rome Leonardo da Vinci International Airport. Impruneta is 14 km from the apartments, San Gimignano is 56 km, Siena is 75 km, Volterra is 78 km, Lucca is 88 km, Pisa is 89 km, Livorno is 95 km, Montepulciano is 109 km, and Montalcino is 113 km.

#### The Property

Located on the third and top floors of a prestigious building with a lift in the heart of Florence, Florence Palace Apartments offer four luxurious residences with stylish contemporary furnishings and meticulous attention to detail. Each apartment exudes elegance and is equipped with top-notch amenities, including a fully-equipped kitchen. The Taurus Apartment, with its modern and sophisticated atmosphere, can accommodate up to four guests (two guests in the double bedroom and two additional guests on a sofa bed).

This 60-square-meter apartment features a double bedroom, a full bathroom with a large Carrara marble shower, and a comfortable double sofa bed. The interior includes a cosy living area with a desk, a fully-equipped kitchen with all the necessary amenities for a comfortable stay, and a beautiful terrace with views of the hills and rooftops of Florence. The apartment also offers modern comforts such as air conditioning, a flat-screen smart TV, and Wi-Fi. Note that there are entrance stairs to access the apartment.

# PHOTOS



