

Property 1551365445



Number of beds: 6

Bedrooms: 3

Accessibility for people with reduced mobility

Pets Allowed

Pets allowed on request.



Air Conditioning Throughout

Included in the rental price.



Air Conditioning In The Bedrooms

Included in the rental price.



Hair Dryer In The Bathrooms



Dryer

Safe

Safe box in two bedrooms.

Crib

Minibar and tea or coffee making facilities

Coffee and tea making facilities in the living room.

The Villa is Less Than 15 km From a Golf Course

The apartment is 12 km from Circolo Golf dell'Ugolino.

The maximum distance from the city centre is 1.5 km

The apartment is located in the city center, in the area of the Basilica di Santa Croce. The Duomo of Florence is about 1,3 km on foot.



Dishwasher



Washing Machine

Mattress sizes and bed dimensions

3 Double bedrooms with queen-size beds.

Bath amenities

Initial supply and weekly refill for longer stays.

Nearby

Supermarket – CONAD CITY Via dei Tintori, 18 (180 meters on foot). Pharmacy – Farmacia SELVA Via Ghibellina, 87/E (280 meters on foot). Tobacco shop – Tabaccheria Santa Croce Piazza Santa Croce, 1/R (170 meters on foot). Bank Artigiancassa - Via Giuseppe Verdi, 16 (300 meters on foot). Restaurant Boccanegra – Via Ghibellina, 124/R (350 meters on foot). Wine Shop Pinchiorri – Via Ghibellina, 87 (270 meters on foot). Baldovino Bistrot – Via San Giuseppe, 22/R (220 meters on foot). Dondino – Piazza Santa Croce, 6/R (190 meters on foot). Restaurant Finisterrae, Piazza di Santa Croce, 12 (120 meters on foot).



Parking Space

The whole area of the historic center of Florence is defined as a Limited Traffic Zone (ZTL). The apartments of the Croce d'Oro Suite Apartment are located inside the ZTL, therefore at each entrance it is necessary to communicate to the parking staff the license plate of your car and the time of entry. In the vicinity of the apartments it is possible to use the TINTORI Garage with which we have an agreement. Daily parking cost not included in the rental price. Opening hours from 7:00 to 1:00.



Heating

Included in the rental price.

High Chair



Concierge Service

Concierge service available via email from 7:00 am to 8:00 pm, included in the rental price.



Housekeeping

Bed linen and bath towels changed every 3 days. The Room & Bathroom Cleaning service is from 10.00 to 14.00. Please notify the manager the day before to request the intervention of extra services. Cost for rearrangement of the rooms, bathroom and linen change not included in the rental price.

Smart TV



Satellite TV



City Views



Wi-Fi

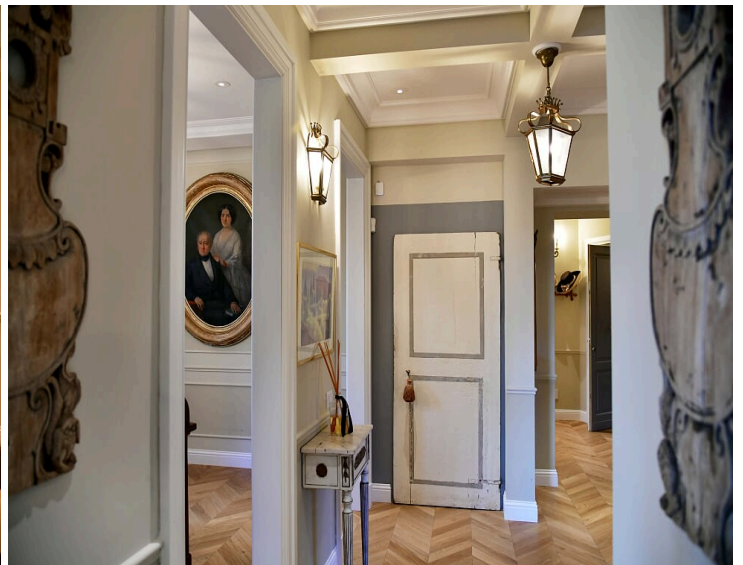
*** Please note:** the included amenities may vary according to final agreement, make sure to check your contract for complete list.

NEARBIES

Florence Palace Apartments are 11 km from Florence Amerigo Vespucci International Airport, 84 km from Pisa Galileo Galilei International Airport, and 304 km from Rome Leonardo da Vinci International Airport. Impruneta is 14 km from the apartments, San Gimignano is 56 km, Siena is 75 km, Volterra is 78 km, Lucca is 88 km, Pisa is 89 km, Livorno is 95 km, Montepulciano is 109 km, and Montalcino is 113 km.

FEATURES

- 3 Double Bedrooms
- 2 Bathrooms + 1 Guest Bathroom
- Fully-Equipped Kitchen
- Living and Dining Area
- Prestigious Study
- Splendid Terrace with City Views
- Espresso Machine and Kettle
- Lift (in the Building)



DESCRIPTION

BLACK TIGER APARTMENT - FLORENCE

3 Bedrooms

Location and Surrounding Area

Located on the third floor of an elegant building in the heart of Florence and steps from the most exclusive dining, shopping, and entertainment options, this modern apartment is the perfect place for a stylish break in one of the most beautiful cities in Italy. From the 13th to the 15th centuries, Florence was the undisputed capital of culture and art in Europe. A few days is enough to discover its wealth of architectural and artistic treasures, but also to enjoy all the other delights of this charming Tuscan city.

Florence's reputation as an art city is unparalleled. The Duomo is the heart of Florence and is very easy to locate. Just look for the high terracotta dome that dominates the city's roof. The area around the Duomo is pedestrianised and usually crammed with tourists. The easiest way to get around this area, with its flat streets and wide pavements, is on foot. There are a few cafés and ice-cream parlours in and around the square, handy for a rest from sightseeing.

The Uffizi art gallery is just off Piazza della Signoria, where a replica of Michelangelo's David stands tall over spectacular fountains beside the stately Palazzo Vecchio. The long loggia of the gallery connects the piazza to the River Arno. It is a short walk from the mediaeval Ponte Vecchio, the oldest bridge in Florence, lined with jewellery shops. The surrounding streets and squares, though thronged with visitors, offer plenty of options for exceptional meals, drinks, and ice cream.

The Uffizi is one of Italy's greatest art galleries. It covers the whole sweep of Florentine art, from stylised Byzantine icons to the flowing lines of early mediaeval art, through Renaissance masterpieces to the colourful complexities of Mannerist art. Do not attempt to see every painting. Instead, see how many animals can be spotted in a painting or stick to highlights by the most famous Italian artists, such as Giotto, Botticelli, Piero della Francesca, Leonardo, and Michelangelo.

The sprawling 16th-century Boboli Gardens, a fine example of Italian Renaissance gardens adjoining the vast hulk of Palazzo Pitti in the Oltrarno district, are the green lungs of the city. Laid out in formal glory, they provide a refreshing break from the city streets. After the gardens, the narrow lanes of Oltrarno offer plenty of great local restaurants and old-fashioned workshops. The area gives an insight into the way the Florentines live, away from the tourist honeypot across the river.

Florence Palace Apartments are 11 km from Florence Amerigo Vespucci International Airport, 84 km from Pisa Galileo Galilei International Airport, and 304 km from Rome Leonardo da Vinci International Airport. Impruneta is 14 km from the apartments, San Gimignano is 56 km, Siena is 75 km, Volterra is 78 km, Lucca is 88 km, Pisa is 89 km, Livorno is 95 km, Montepulciano is 109 km, and Montalcino is 113 km.

The Property

Located on the third and top floors of a prestigious building with a lift in the heart of Florence, Florence Palace Apartments offer four luxurious residences with stylish contemporary furnishings and meticulous attention to detail. Each apartment exudes elegance and is equipped with modern comforts, including a fully-equipped kitchen. The Black Tiger Apartment, characterised by its classic and sophisticated ambiance, accommodates up to six guests across three double bedrooms.

Spanning two floors, this luxurious 200-sqm apartment features three double bedrooms: one with an en-suite bathroom and shower on the ground floor, one with an en-suite bathroom including both a shower and tub on the first floor, and one additional bedroom (without a bathroom) also on the first floor. On the ground floor, there is also a guest bathroom. The apartment boasts a well-equipped kitchen, a prestigious study, a spacious living room with a sofa overlooking the Basilica of Santa Croce, and a splendid terrace with views over the city rooftops.

PHOTOS

