

Property 1551365447



Number of beds: 4 + 2

Bedrooms: 2

Accessibility for people with reduced mobility

Pets Allowed

Pets allowed on request.



Air Conditioning Throughout

Included in the rental price.



Air Conditioning In The Bedrooms

Included in the rental price.



Hair Dryer In The Bathrooms



Dryer

Crib

The Villa is Less Than 15 km From a Golf Course

The apartment is 12 km from Circolo Golf dell'Ugolino.

The maximum distance from the city centre is 1.5 km

The apartment is located in the city center, in the area of the Basilica di Santa Croce. The Duomo of Florence is about 1,3 km on foot.



Washing Machine

Mattress sizes and bed dimensions

Bath amenities

Initial supply and weekly refill for longer stays.

Nearby



Parking Space

The whole area of the historic center of Florence is defined as a Limited Traffic Zone (ZTL). The apartment is located within the ZTL, so at each entrance it is necessary to communicate the license plate of your car and the time of entry to the parking staff. Near the apartment, you will find a garage with which there is an agreement. Daily parking cost starting not included in the rental price. Opening hours from 7:00 am to 1:00 am.

Heating

Included in the rental price.

High Chair

Concierge Service

Concierge service available via email from 7:00 am to 8:00 pm. Included in the rental price.

Housekeeping

Bed linen and bath towels are changed every three days. The Room & Bathroom Cleaning Service is from 10:00 am to 14:00 pm. Please notify the apartment manager the day before to request this extra service. Cost for rearrangement of rooms, bathroom and change of linen are not included in the rental price.

Smart TV

Satellite TV

City Views

Wi-Fi

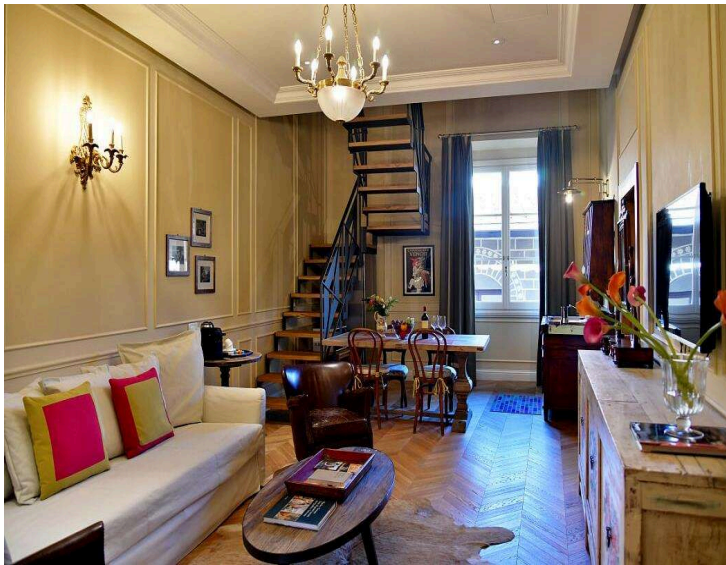
* **Please note:** the included amenities may vary according to final agreement, make sure to check your contract for complete list.

NEARBIES

Bargello, Uffizi Gallery, Piazza Signoria, Ponte Vecchio. Amerigo Vespucci international airport 5 km

FEATURES

- 2 Double Bedrooms + 1 Sofa Bed
- 2 Bathrooms
- Well-Equipped Kitchen
- Living and Dining Area
- Espresso Machine and Kettle
- Terrace
- Elevator (in the Building)



DESCRIPTION

Virgo Apartment

Location and Surrounding Area

Located on the third and fourth floor of an elegant building in the heart of Florence and steps from the most exclusive dining, shopping and entertainment options, this modern apartment is the perfect place for a stylish break in one of the most beautiful cities in Italy. From the 13th to the 15th century, Florence was the undisputed capital of culture and art in Europe. A few days is enough to discover its wealth of architectural and artistic treasures, but also to enjoy all the other delights of this charming Tuscan city.

Florence's reputation as an art city is unparalleled. The Duomo is the heart of Florence, and is very easy to locate. Just look for the high terracotta dome that dominates the city's roofscape. The area around the Duomo is pedestrianized and usually crammed with tourists. The easiest way to get around this area, with its flat streets and wide pavements, is on foot. There are a few cafés and ice-cream parlors in and around the square, handy for a rest from sightseeing.

The Uffizi art gallery is just off Piazza della Signoria, where a replica of Michelangelo's David stands tall over spectacular fountains beside the stately Palazzo Vecchio. The long loggia of the gallery connects the piazza to the River Arno. It is a short walk from the medieval Ponte Vecchio, the oldest bridge in Florence, lined with jewelry shops. The surrounding streets and squares, though thronged with visitors, offer plenty of options for exceptional meals, drinks and ice creams.

The Uffizi is one of Italy's greatest art galleries. It covers the whole sweep of Florentine art, from stylized Byzantine icons to the flowing lines of early medieval art, through Renaissance masterpieces to the colorful complexities of Mannerist art. Do not attempt to see every painting. Instead, see how many animals can be spotted in a painting, or stick to highlights by the most famous Italian artists, such as Giotto, Botticelli, Piero della Francesca, Leonardo and Michelangelo.

The sprawling 16th-century Boboli Gardens, a fine example of Italian Renaissance gardens adjoining the vast hulk of Palazzo Pitti in the Oltrarno district, are the green lungs of the city. Laid out in formal glory, they provide a refreshing break from the city streets. After the gardens, the narrow lanes of Oltrarno offer plenty of great local restaurants and old-fashioned workshops. The area gives an insight into the way the Florentines live, away from the tourist honeypot across the river.

Florence Apartments are 11 km from Florence Amerigo Vespucci International Airport, 84 km from Pisa Galileo Galilei International Airport and 304 km from Rome Leonardo da Vinci International Airport. Impruneta is 14 km from the apartments, San Gimignano is 56 km, Siena is 75 km, Volterra is 78 km, Lucca is 88 km, Pisa is 89 km, Livorno is 95 km, Montepulciano is 109 km and Montalcino is 113 km.

The Property

Located on the third and last floor of a prestigious building with elevator in the heart of Florence, Florence Palace Apartments are four luxurious apartments with stylish contemporary furnishings and attention to detail. Offering an impressive sense of elegance, all the apartments are equipped with the best comforts, including a well-equipped kitchen. With a modern and sophisticated atmosphere, Virgo Apartment can accommodate up to six guests (four guests plus two extra guests).

Furnished with refined furniture, this 70-sqm apartment is equipped with all comforts and features a kitchen equipped with every comfort derived from a precious nineteenth-century cupboard, bathrooms with prestigious Carrara marble, and tastefully-furnished rooms. The apartment is composed of two double bedrooms, each with its own bathroom, one of them located on a mezzanine level. In the living room, you will find a comfortable double sofa bed for two extra guests.

PHOTOS

