

Property 1633097708





Number of beds: 4 + 2

Bedrooms: 2

Bathrobes and Slippers

Bathrobes and slippers available for each guest.

 **Air Conditioning Throughout**
Included in the rental price.

 **Air Conditioning In The Bedrooms**
Included in the rental price.

 **Hair Dryer In The Bathrooms**

Crib

Minibar and tea or coffee making facilities

In the kitchen corner, you will find a Nespresso coffee machine with some pods, and some tea bags and herbal teas.

 **Internet in the garden and common areas**

The maximum distance from the city centre is 1.5 km

The apartment is located in the center of Florence.

 **Dishwasher**

Mattress sizes and bed dimensions

2 Double Bedrooms (160x200) + 1 Sofa Bed.

Bath amenities

Weekly refill.

Nearby

Carrefour Supermarket: about 200 m from the apartment. Trattoria Tiberio: 150 m. Cisbani Pharmacy: 50 m. Sella Bank: 400 m.

 Heating

Heating with radiators, included in the rental price.

 Satellite TV

 Wi-Fi

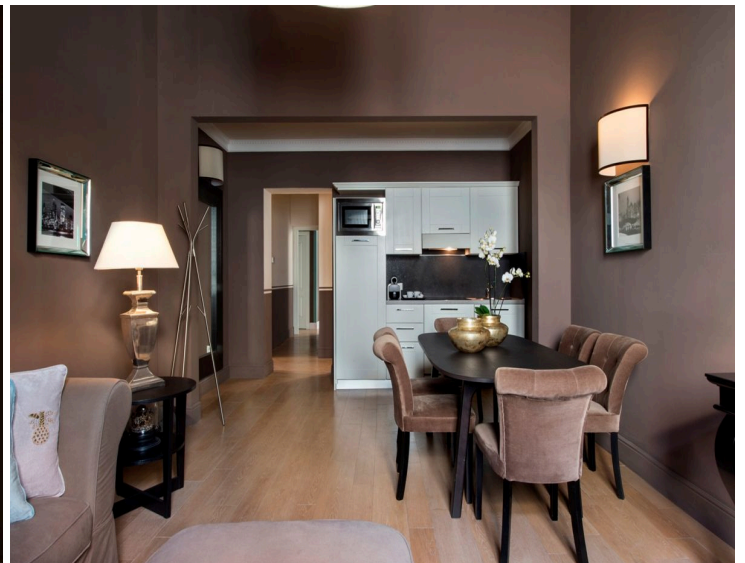
* **Please note:** the included amenities may vary according to final agreement, make sure to check your contract for complete list.

NEARBIES

Impruneta 17 km, San Gimignano 56 km, Siena 75 km, Lucca 76 km, Volterra 78 km, Pisa 85 km, Livorno 91 km, Montepulciano 111 km and Montalcino 113 km

FEATURES

- 2 Double Bedrooms + 1 Sofa Bed
- 2 Bathrooms with Shower
- Kitchenette
- Living and Dining Area
- Microwave
- Nespresso Coffee Machine
- No Elevator



DESCRIPTION

Property 1633097708 - Florence

2 Double Bedrooms

Location and Surrounding Area. Located on the second floor of an elegant building in the historic center of Florence and steps from the most exclusive dining, shopping and entertainment options, this elegant apartment is the perfect place for a stylish break in one of the most beautiful cities in Italy. From the 13th to the 15th century, Florence was the undisputed capital of culture and art in Europe. A few days is enough to discover its wealth of architectural and artistic treasures, but also to enjoy all the other delights of this charming Tuscan city.

Florence's reputation as an art city is unparalleled. The Duomo is the heart of Florence, and is very easy to locate. Just look for the high terracotta dome that dominates the city's roofscape. The area around the Duomo is pedestrianized and usually crammed with tourists. The easiest way to get around this area, with its flat streets and wide pavements, is on foot. There are a few cafés and ice-cream parlors in and around the square, handy for a rest from sightseeing.

The Uffizi art gallery is just off Piazza della Signoria, where a replica of Michelangelo's David stands tall over spectacular fountains beside the stately Palazzo Vecchio. The long loggia of the gallery connects the piazza to the River Arno. It is a short walk from the medieval Ponte Vecchio, the oldest bridge in Florence, lined with jewellery shops. The surrounding streets and squares, though thronged with visitors, offer plenty of options for exceptional meals, drinks and ice creams.

The Uffizi is one of Italy's greatest art galleries. It covers the whole sweep of Florentine art, from stylized Byzantine icons to the flowing lines of early medieval art, through Renaissance masterpieces to the colorful complexities of Mannerist art. Do not attempt to see every painting. Instead, see how many animals can be spotted in a painting, or stick to highlights by the most famous Italian artists, such as Giotto, Botticelli, Piero della Francesca, Leonardo and Michelangelo.

The sprawling 16th-century Boboli Gardens, a fine example of Italian Renaissance gardens adjoining the vast hulk of Palazzo Pitti in the Oltrarno district, are the green lungs of the city. Laid out in formal glory, they provide a refreshing break from the city streets. After the gardens, the narrow lanes of Oltrarno offer plenty of great local restaurants and old-fashioned workshops. The area gives an insight into the way the Florentines live, away from the tourist honeypot across the river.

Property 1633097708 is 8 km from Florence Amerigo Vespucci International Airport, 80 km from Pisa Galileo Galilei International Airport and 305 km from Rome Leonardo da Vinci International Airport. Impruneta is 17 km from the property, San Gimignano is 56 km, Siena is 75 km, Lucca is 76 km, Volterra is 78 km, Pisa is 85 km, Livorno is 91 km, Montepulciano is 111 km and Montalcino is 113 km.

The Property. Located on the second floor of an elegant building in the historic center of Florence, Property 1633097708 boasts stylish contemporary furnishings and attention to detail. Offering an impressive sense of comfort and elegance, this exceptionally-designed apartment boasts a modern and sophisticated atmosphere. Property 1633097708 can accommodate six guests (four guests and two extra guests) featuring two double bedrooms and a comfortable double sofa bed.

The building is located in the historic center of the city, just few minutes from the Santa Maria Novella Train Station, the Fortezza da Basso Exhibition Center, the Leopolda Station and the Congress Palace of Florence. Built in the period when Florence was the capital of Italy, the building was recently restored and divided into suites equipped with every comfort, welcoming guests in a sophisticated atmosphere. Please note that the building has no elevator.

The interior space of Property 1633097708 comprises an elegant open-plan dining and living area with comfortable sofa bed and kitchenette with all the amenities you might need during your stay, and two exceptional double bedrooms complete with bathroom with shower and complimentary toiletries. Offering charm and modern comfort, the apartment boasts air conditioning, flat-screen satellite TV, wireless Internet access, fridge, microwave, Nespresso coffee machine, and coffee and tea making facilities.

PHOTOS

