



Property 1633097723



**\* Please note:** the included amenities may vary according to final agreement, make sure to check your contract for complete list.

**Number of beds:** 8 + 4

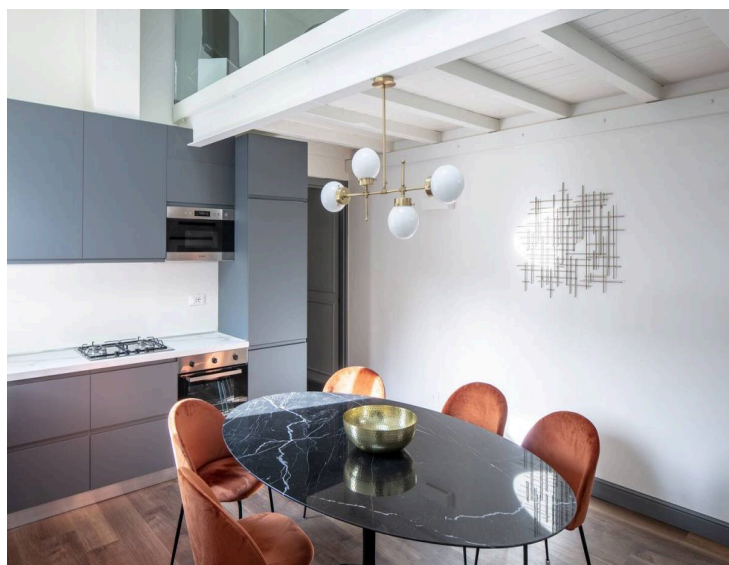
**Bedrooms:** 4

## NEARBIES

Impruneta 17 km, San Gimignano 56 km, Siena 75 km, Lucca 76 km, Volterra 78 km, Pisa 85 km, Livorno 91 km, Montepulciano 111 km, Montalcino 113 km

## FEATURES

- 4 Double Bedrooms + 1 Single Bed (Convertible into a Double Bed) + 2 Double Sofa Beds
- 4 En-Suite Bathrooms with Shower + 1 Free-Standing Tub
- Fully-Equipped Kitchen
- Dining Area
- Lounge Area
- Balcony



# DESCRIPTION

## **Property 1633097723 - Florence**

### **4 Bedrooms - 2 Sofa Beds**

**Location and Surrounding Area.** Located on the second floor of a palazzo near the very center of Florence and steps from the most exclusive dining, shopping and entertainment options, this unique apartment is the perfect place for a stylish break in one of the most beautiful cities in Italy. From the 13th to the 15th century, Florence was the undisputed capital of culture and art in Europe. A few days is enough to discover its wealth of architectural and artistic treasures, but also to enjoy all the other delights of this charming Tuscan city.

Florence's reputation as an art city is unparalleled. The Duomo is the heart of Florence, and is very easy to locate. Just look for the high terracotta dome that dominates the city's roofscape. The area around the Duomo is pedestrianized and usually crammed with tourists. The easiest way to get around this area, with its flat streets and wide pavements, is on foot. There are a few cafés and ice-cream parlors in and around the square, handy for a rest from sightseeing.

The Uffizi art gallery is just off Piazza della Signoria, where a replica of Michelangelo's David stands tall over spectacular fountains beside the stately Palazzo Vecchio. The long loggia of the gallery connects the piazza to the River Arno. It is a short walk from the medieval Ponte Vecchio, the oldest bridge in Florence, lined with jewelry shops. The surrounding streets and squares, though thronged with visitors, offer plenty of options for exceptional meals, drinks and ice creams.

The Uffizi is one of Italy's greatest art galleries. It covers the whole sweep of Florentine art, from stylized Byzantine icons to the flowing lines of early medieval art, through Renaissance masterpieces to the colorful complexities of Mannerist art. Do not attempt to see every painting. Instead, see how many animals can be spotted in a painting, or stick to highlights by the most famous Italian artists, such as Giotto, Botticelli, Piero della Francesca, Leonardo and Michelangelo.

The sprawling 16th-century Boboli Gardens, a fine example of Italian Renaissance gardens adjoining the vast hulk of Palazzo Pitti in the Oltrarno district, are the green lungs of the city. Laid out in formal glory, they provide a refreshing break from the city streets. After the gardens, the narrow lanes of Oltrarno offer plenty of great local restaurants and old-fashioned workshops. The area gives an insight into the way the Florentines live, away from the tourist honeypot across the river.

Property 1633097723 is 7 km from Florence Amerigo Vespucci International Airport, 81 km from Pisa Galileo Galilei International Airport and 306 km from Rome Leonardo da Vinci International Airport. The apartment is located near the very center of Florence and just a 4-minute walk from Cattedrale di Santa Maria del Fiore. Impruneta is 17 km from the property, San Gimignano is 56 km, Siena is 75 km, Lucca is 76 km, Volterra is 78 km, Pisa is 85 km, Livorno is 91 km, Montepulciano is 111 km and Montalcino is 113 km.

**The Property.** Located on the second floor of a palazzo in the historic center of Florence, Property 1633097723 boasts stylish contemporary furnishings and great attention to detail. Offering an impressive sense of comfort and plenty of light, this exceptionally-designed apartment boasts a modern and sophisticated atmosphere. Recently restored, Property 1633097723 can accommodate twelve guests (eight guests plus four extra guests) featuring four double bedrooms, a single bed convertible into a double bed and two double sofa beds.

Carefully restored in 2019 and welcoming guests in a sophisticated atmosphere, Property 1633097723 boasts four double bedrooms, each with en-suite bathroom. Each bathroom features a large shower. One of the bedrooms, the Master Suite, also boasts a free-standing tub under a starry sky of LEDs. The Master Suite also has a mezzanine with a single bed convertible into a double bed. Flooded with light, the apartment boasts a fully-equipped kitchen complete with dining table and a mezzanine with a double sofa bed.

Overlooking a charming inner garden, the apartment also features a bright lounge area complete with TV, comfortable double sofa bed and decorative fireplace. With a balcony overlooking the golden ball of Santa Maria del Fiore Cathedral, built by Andrea del Verrocchio in 1468 and placed on the Cathedral in 1471, the apartment boasts charm and modern comfort. Please note that the apartment is located on the second floor of a palazzo with no elevator.



PHOTOS

